

ELECTRODISTRIBUTEUR 3/2 OU 5/2 NF A TIROIRS
3/2 OR 5/2 NC SPOOL DESIGN SOLENOID

PLD



DESCRIPTION

Electrodistributeur PARKER 3/2 ou 5/2 NF à tiroirs, commande directe 1/4" pour actionneur pneumatique 1/4 de tour embase Namur.

DONNÉES TECHNIQUES

Tensions : 12V/24V/48V DC
 24V/48V/115V/230V AC
 Puissance : DC: 2,5W - AC: 2W
 Température ambiante : -10°C à +50°C
 Type fluide : Air comprimé
 Pression : 2 - 10 Bar - Protection: IP65

MATIÈRES

Corps : Aluminium anodisé dur
 Pièces internes : Acier inoxydable
 Joint : NBR

DESCRIPTION

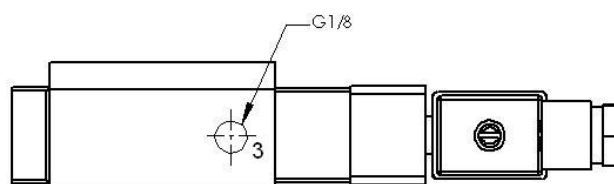
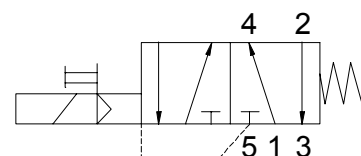
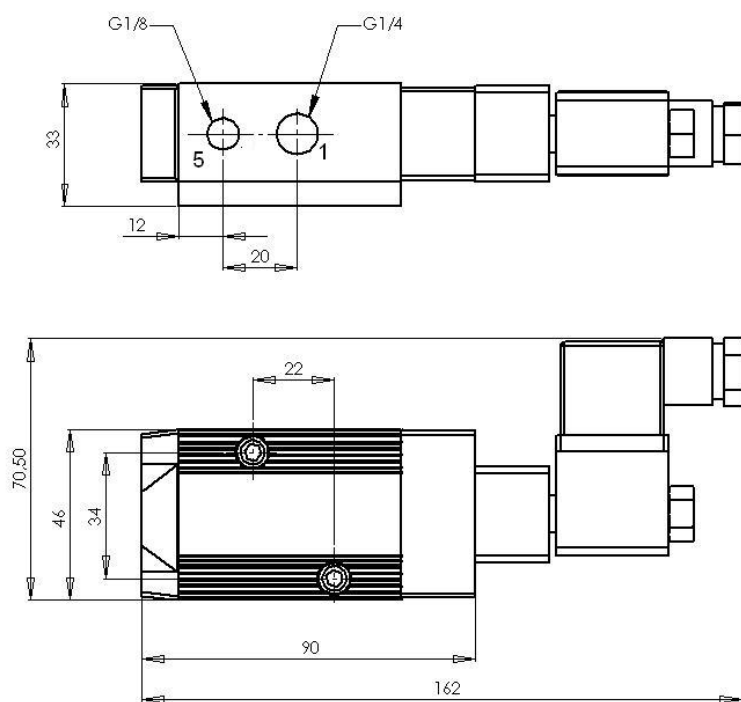
PARKER 3/2 or 5/2 NC spool design solenoid valve, 1/4" direct operated with manual override for 1/4 turn Namur base pneumatic actuator.

TECHNICAL DATA

Voltages: 12V/24V/48V DC
 24V/48V/115V/230V AC
 Power consumption: DC: 2,5W - AC: 2W
 Ambient temperature: -10°C to +50°C
 Fluid: compressed air
 Pressure: 2 - 10 Bar - Enclosure: IP65

MATERIAL

Body: Anodised aluminium
 Inside parts: Stainless steel
 Seat: NBR



Code	G entrée / alimentation	DN mm	G échappement / exhaust port	Tensions Voltages
PLD1.904.311	1/4"	4	1/8"	12V DC
PLD2.904.311	1/4"	4	1/8"	24V DC
PLD3.904.311	1/4"	4	1/8"	24V AC
PLD4.904.311	1/4"	4	1/8"	48V AC
PLD5.904.311	1/4"	4	1/8"	48V AC
PLD7.904.311	1/4"	4	1/8"	115V AC
PLD8.904.311	1/4"	4	1/8"	230V AC
NQAP170000	Embase de conversion permettant de changer l'orientation de l'électrodistributeur de 90° Conversion base which allows to change the 90° orientation solenoid valve			