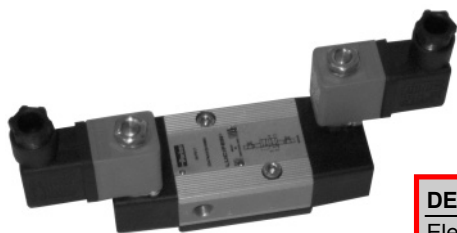


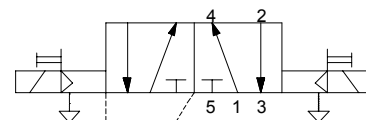
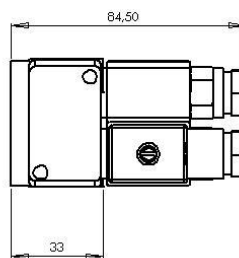
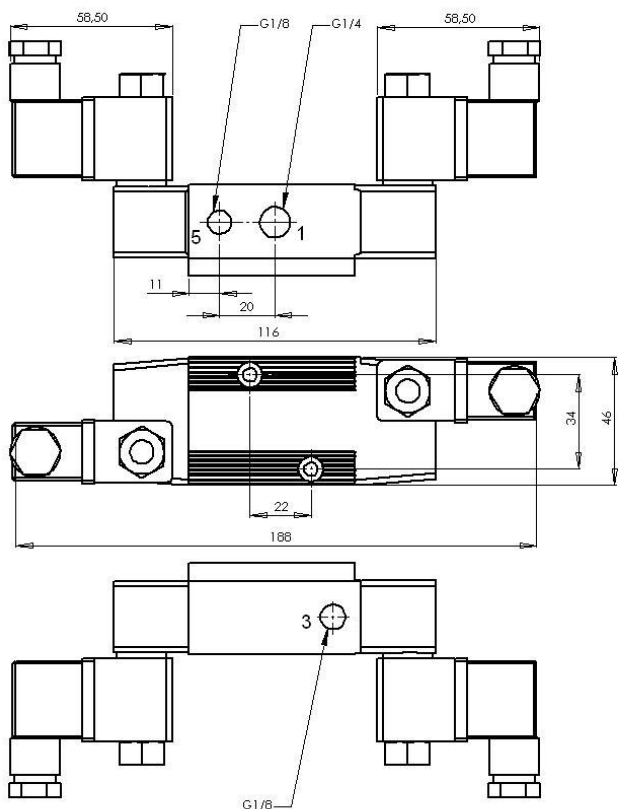
ELECTRODISTRIBUTEUR 3/2 OU 5/2 NF BISTABLE A TIROIRS

3/2 OR 5/2 NC BISTABLE SPOOL DESIGN SOLENOID VALVE

PLB



DESCRIPTION	DESCRIPTION
Electrodistributeur PARKER 3/2 ou 5/2 NF bistable à tiroirs, commande directe 1/4" pour actionneur pneumatique 1/4 de tour embase Namur.	PARKER 3/2 or 5/2 NC bistable spool design solenoid valve, 1/4" direct operated with manual override for 1/4 turn Namur base pneumatic actuator.
DONNÉES TECHNIQUES	TECHNICAL DATA
Tensions : 24V DC* 24V/115V/230V AC*	Voltages: 24V DC* 24V/115V/230V AC*
Puissance : DC: 2,5W - AC: 2W	Power supply: DC: 2,5W - AC: 2W
Température ambiante : -10°C à +50°C	Ambiant temperature: -10°C to +50°C
Type fluide : Air comprimé	Fluid: compressed air
Pression : 2 - 10 Bar	Pressure: 2 - 10 Bar
Protection : IP65	Enclosure: IP65
MATIÈRES	MATERIAL
Corps : Aluminium anodisé dur	Body: Anodised aluminium
Pièces internes : Acier inoxydable	Inside parts: Stainless steel
Joint : NBR	Seat: NBR



Code	G entrée / alimentation	DN mm	G échappement / exhaust port	Tensions Voltages
PLB2.904.311	1/4"	4	1/8"	24V DC
PLB3.904.311	1/4"	4	1/8"	24V AC
PLB5.904.311	1/4"	4	1/8"	48V AC
PLB7.904.311	1/4"	4	1/8"	115V AC
PLB8.904.311	1/4"	4	1/8"	230V AC